

# Sonata I BWV 1001

## "Sechs Sonaten für Violine"

Johann Sebastian Bach (1685-1750)

2. Fuga

BWV 1001

Violine *Allegro*

1  
4  
7  
9  
11  
13  
15  
18  
21

24 Musical staff 24: Treble clef, key signature of one flat (B-flat). Measure 24 starts with a triplet of eighth notes (G4, A4, B4) marked with a '7' and a trill 'tr' above the B4. The melody continues with eighth and quarter notes. The bass line consists of quarter notes: G3, F3, E3, D3, C3, B2, A2, G2.

27 Musical staff 27: Treble clef, key signature of one flat. Measure 27 starts with a triplet of eighth notes (G4, A4, B4) marked with a '7'. The melody continues with eighth and quarter notes. The bass line consists of quarter notes: G3, F3, E3, D3, C3, B2, A2, G2.

30 Musical staff 30: Treble clef, key signature of one flat. Measure 30 starts with a triplet of eighth notes (G4, A4, B4) marked with a '7'. The melody continues with eighth and quarter notes. The bass line consists of quarter notes: G3, F3, E3, D3, C3, B2, A2, G2.

33 Musical staff 33: Treble clef, key signature of one flat. Measure 33 starts with a triplet of eighth notes (G4, A4, B4) marked with a '7'. The melody continues with eighth and quarter notes. The bass line consists of quarter notes: G3, F3, E3, D3, C3, B2, A2, G2.

36 Musical staff 36: Treble clef, key signature of one flat. Measure 36 starts with a triplet of eighth notes (G4, A4, B4) marked with a '7'. The melody continues with eighth and quarter notes. The bass line consists of quarter notes: G3, F3, E3, D3, C3, B2, A2, G2.

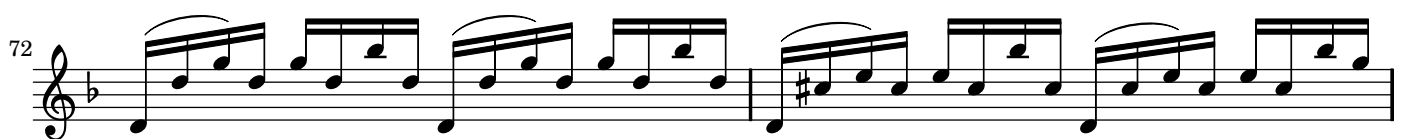
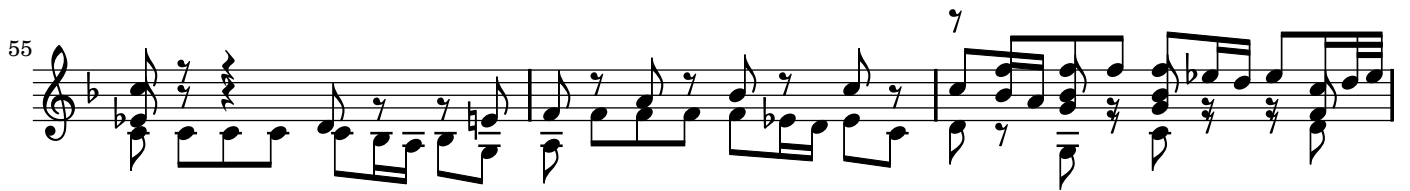
39 Musical staff 39: Treble clef, key signature of one flat. Measure 39 starts with a triplet of eighth notes (G4, A4, B4) marked with a '7'. The melody continues with eighth and quarter notes. The bass line consists of quarter notes: G3, F3, E3, D3, C3, B2, A2, G2.

42 Musical staff 42: Treble clef, key signature of one flat. Measure 42 starts with a triplet of eighth notes (G4, A4, B4) marked with a '7'. The melody continues with eighth and quarter notes. The bass line consists of quarter notes: G3, F3, E3, D3, C3, B2, A2, G2.

44 Musical staff 44: Treble clef, key signature of one flat. Measure 44 starts with a triplet of eighth notes (G4, A4, B4) marked with a '7'. The melody continues with eighth and quarter notes. The bass line consists of quarter notes: G3, F3, E3, D3, C3, B2, A2, G2.

46 Musical staff 46: Treble clef, key signature of one flat. Measure 46 starts with a triplet of eighth notes (G4, A4, B4) marked with a '7'. The melody continues with eighth and quarter notes. The bass line consists of quarter notes: G3, F3, E3, D3, C3, B2, A2, G2.

48 Musical staff 48: Treble clef, key signature of one flat. Measure 48 starts with a triplet of eighth notes (G4, A4, B4) marked with a '7'. The melody continues with eighth and quarter notes. The bass line consists of quarter notes: G3, F3, E3, D3, C3, B2, A2, G2.



74

77

79

81

84

87

89

91

93

Sheet music from [www.MutopiaProject.org](http://www.MutopiaProject.org) • Free to download, with the *freedom* to distribute, modify and perform.

Typeset using [www.LilyPond.org](http://www.LilyPond.org) by Hajo Dezelski. Copyright © 2008. Reference: Mutopia-2008/06/02-1438

Licensed under the Creative Commons Attribution-ShareAlike 3.0 (Unported) License, for details see: <http://creativecommons.org/licenses/by-sa/3.0>