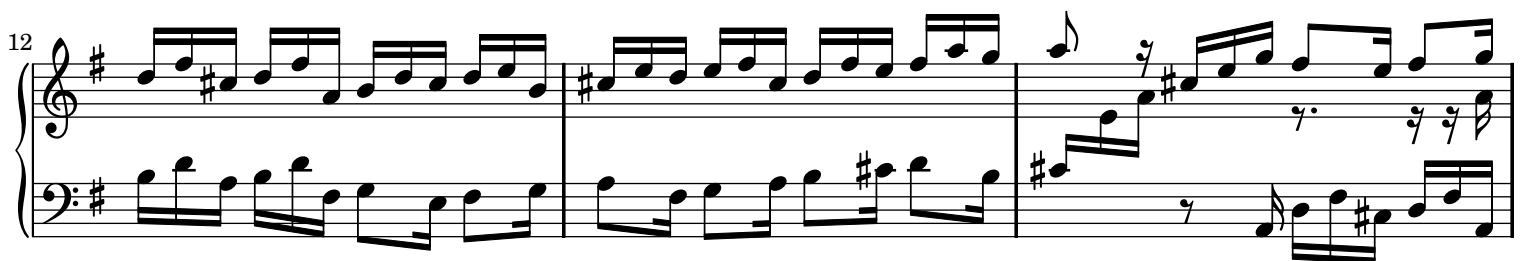
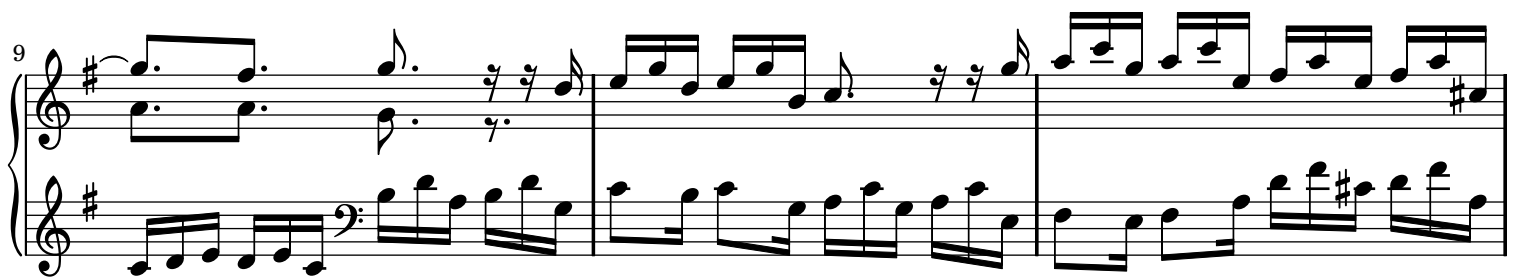
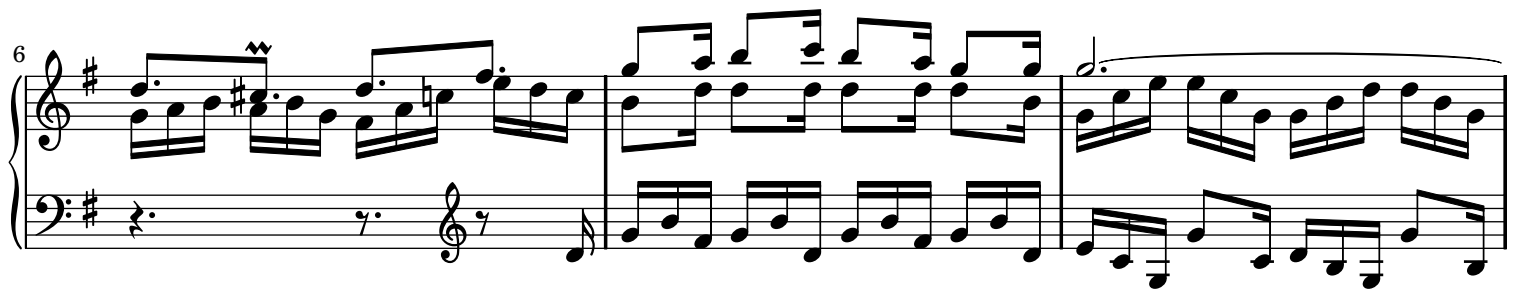
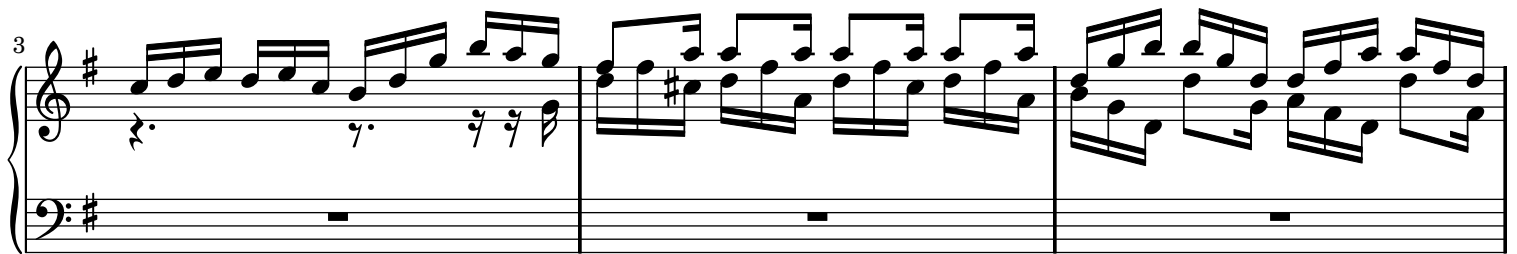
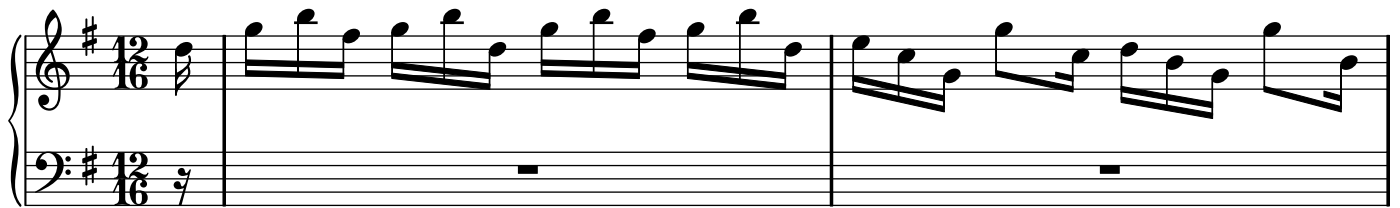


French Suite V: Gigue

J. S. Bach (1685-1750)

BWV 816



15

Measures 15-17 of a musical score in G major. The treble clef contains a melody with eighth and sixteenth notes, including a trill in measure 16. The bass clef provides a steady accompaniment of eighth notes.

18

Measures 18-20. The treble clef features a melody with eighth notes and a trill in measure 19. The bass clef continues with eighth-note accompaniment.

21

Measures 21-23. The treble clef has a melody with eighth notes and a trill in measure 22. The bass clef accompaniment includes some chords and eighth notes.

24

Measures 24-26. Measure 24 contains a trill in the treble and a double bar line. Measures 25 and 26 show the continuation of the melody and accompaniment.

27

Measures 27-29. The treble clef has a melody with eighth notes and a trill in measure 28. The bass clef accompaniment consists of eighth notes.

30

Measures 30-32. The treble clef features a melody with eighth notes and a trill in measure 31. The bass clef accompaniment includes eighth notes and chords.

33

Measures 33-35 of a musical score in G major. The treble clef contains a continuous eighth-note melody. The bass clef features a more complex accompaniment with dotted rhythms and rests.

36

Measures 36-38 of a musical score in G major. The treble clef continues with eighth-note patterns, while the bass clef introduces a new rhythmic motif with eighth-note runs.

39

Measures 39-41 of a musical score in G major. The treble clef features a melodic line with slurs and ties, and the bass clef provides a steady accompaniment of eighth notes.

42

Measures 42-44 of a musical score in G major. The treble clef has a more active melody with frequent beamed eighth notes, and the bass clef continues with a consistent eighth-note accompaniment.

45

Measures 45-47 of a musical score in G major. The treble clef shows a melodic progression with slurs, and the bass clef maintains the eighth-note accompaniment pattern.

Sheet music for piano, measures 48-54. The music is written in G major (one sharp) and 4/4 time. The key signature is one sharp (F#). The tempo is marked 'Allegretto'. The music features a complex, flowing melody in the right hand, often using triplets and sixteenth notes, while the left hand provides a steady, rhythmic accompaniment with eighth and sixteenth notes. The piece concludes with a final cadence in measure 54.

48

51

54