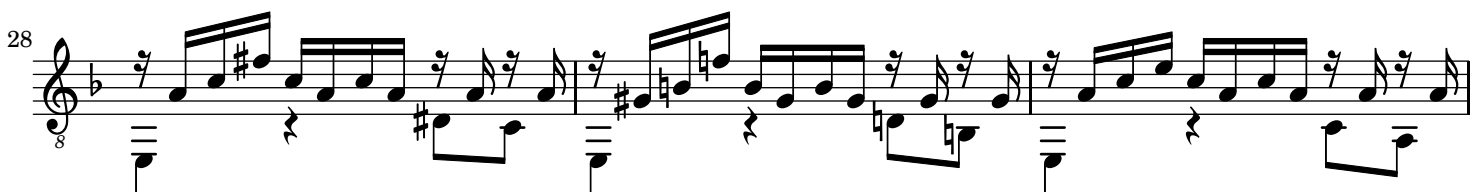
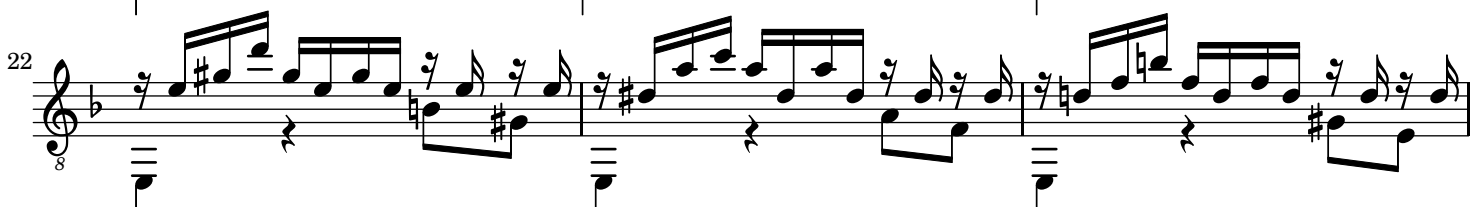
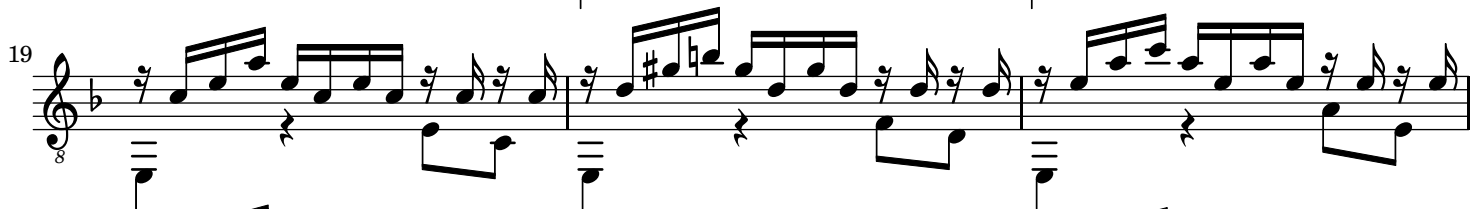
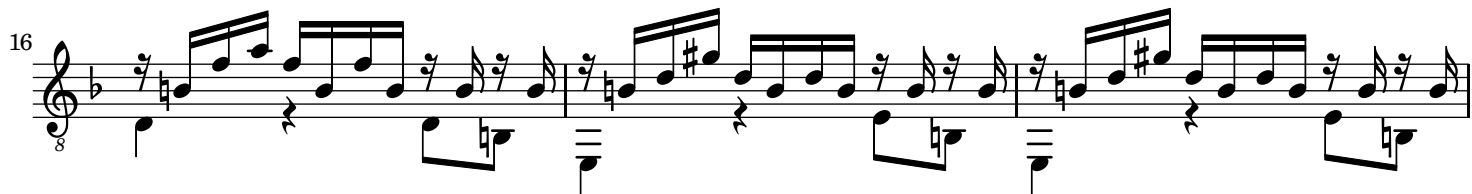
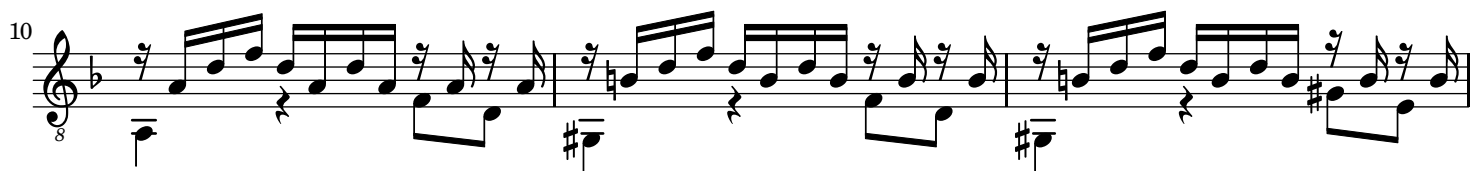


Prelude

J.S. Bach (1685-1750)
BWV 999



2

31



34

37

40

The image shows a musical score for a single melodic line on a treble clef staff. The music is in 2/8 time and features a complex rhythmic pattern of eighth and sixteenth notes. The key signature changes from one flat (B-flat) to two sharps (D major) between measures 31 and 34. The score is divided into four systems, with measure numbers 31, 34, 37, and 40 marking the beginning of each system. The final measure (40) concludes with a double bar line and a fermata over the final chord.