

A Second Set of Six Duets for a Violin & Tenor

Benjamin Blake
Op. 2 No. 3

Duetto III

Allegro con Espressione

Viola

The musical score for the Viola part of Duetto III is written in treble clef with a key signature of two sharps (F# and C#) and a common time signature (C). The tempo is marked 'Allegro con Espressione'. The score consists of 44 measures, divided into systems of four measures each. The notation includes various musical symbols such as eighth notes, sixteenth notes, and triplets. Dynamic markings include 'p' (piano), 'f' (forte), and 'Dolce' (sweet). The score also features trills (tr) and slurs. The piece concludes with a double bar line and repeat signs.

49 *p*

53 *ff*

57

62

68

73 *p* *cresc.* *f*

79 *p*

84 *f* *p*

90 *f*

95 *Dolce*

100

Viola

[illegible]

4

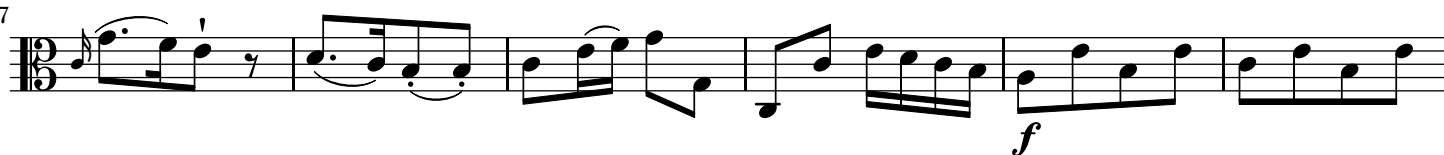
66



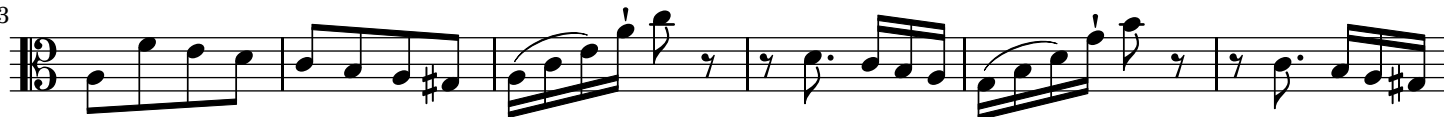
72



77



83



89

