

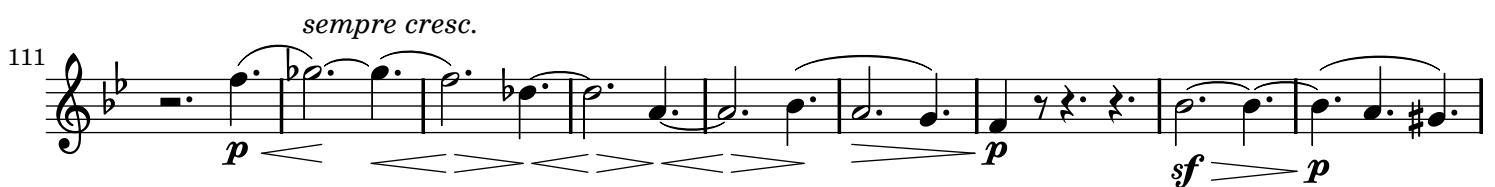
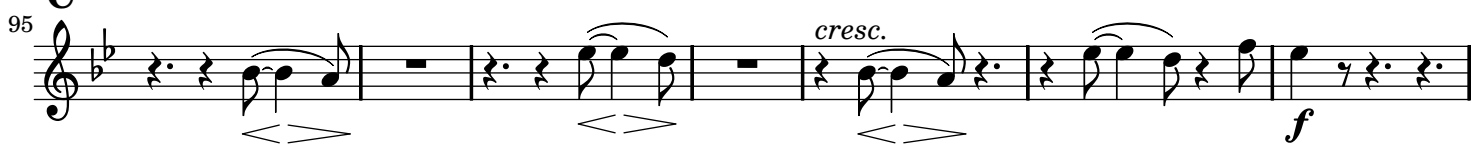
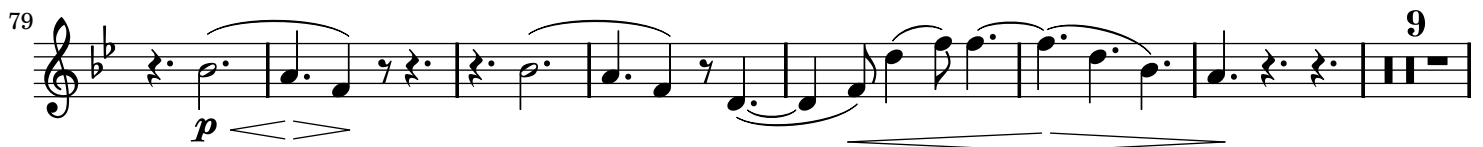
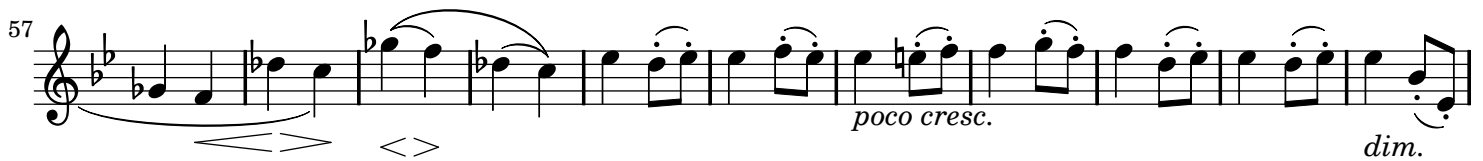
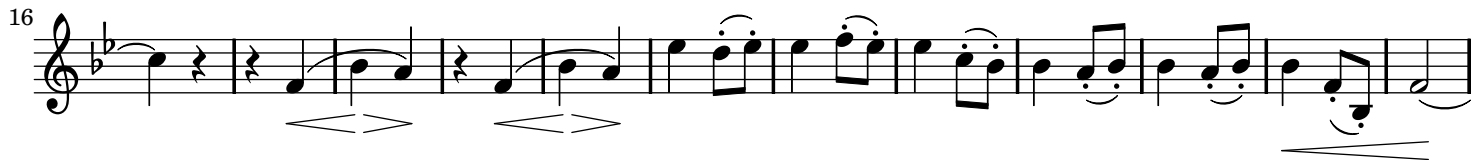
Trio in E \flat Major, Op. 40

for Piano, Violin and Horn or Viola or Cello

Horn in F

Johannes Brahms (1833-1897)

Andante



120 *sf* *p* *dim. poco a poco rit.* 2

130 **Tempo I** *p* *dolce* **E**

140

152 *poco cresc.* *dim.*

Poco più animato *senza rit.* 2 *p* *p*

172

F 179 *sempre cresc.*

186 *sf* *p* *sf* *p* *dim. poco a poco* **G**

Tempo I 194 2 *pp*

204 *poco cresc.* - - - - -

H *espress. sempre cresc.* - - - - - *ad lib.* *un poco animato poi a poi* *f*

229  *ad lib.*

242  *dim.* *sempre dim. e rit. poco a poco*

255 

Scherzo

Allegro

12 **A**  *f*

23 

37  *fp* *p*

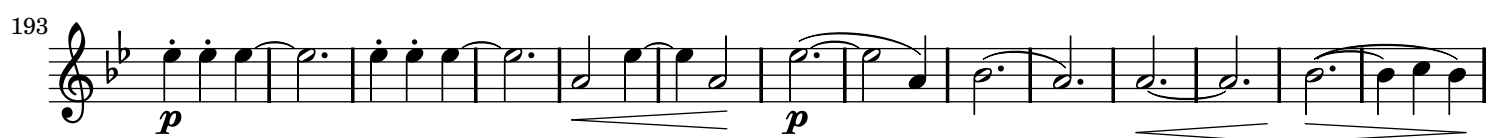
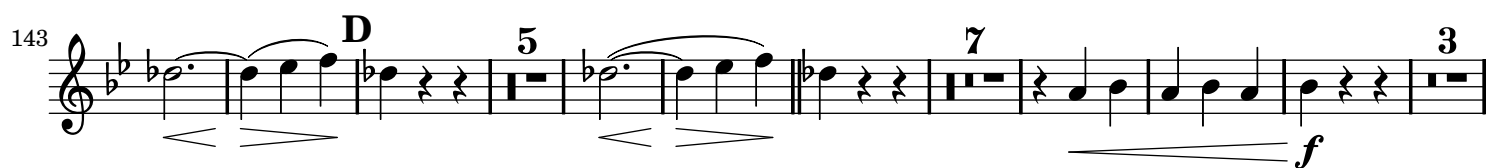
50  *mf cresc.*

64  *cresc.*

77  *p*

91  *cresc.* *f*

105  *p dolce*



313 **2** **2 H** *p espress.*

330 *cresc. - - - - -*

343 *dim.* *p* *dim.* **8** D.C. al Fine

Adagio mesto

4 *p espress.*

10 *pp* **3 A** *p*

22 *p*

28 *dim.* **B**

34 *dim.*

43 **4** *p espress.*

56 **3 C** *molto p* *pp*

67 *poco accel.* *f passionato* **D** *ff*

88 1. 2. *mf* *cresc.* - - - - - *f*

98 2. 2. **E** *f*

108 2. *p* *espress.*

120 *p*

128 *poco a poco cresc.* - - - - -

138 **F** *f* *f* *f*

147 *p*

157

167 7 *mf* 3

183 *f*

192 **G** *f*

201

209  *fp*

216  *f*

224  *f*

232  *p*

241  *più p* *pp* *p*

254  *mf cresc. - - - - - f*

265  *f*

273  *f*

281  *ff*

288  *f*