

2
3.

Cello

Adagio



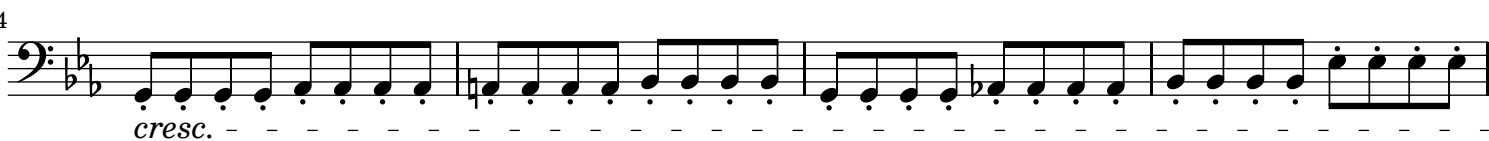
6



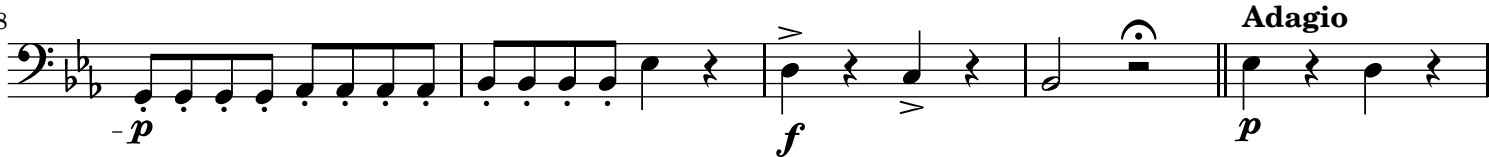
10



14



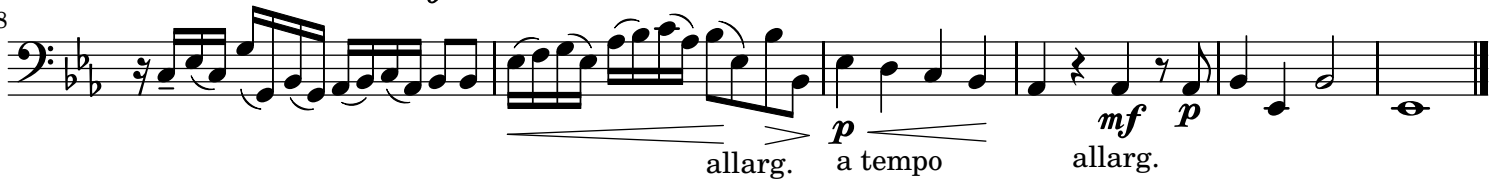
18



23



28



4.

Vivace.



10



19



5.

Allegro



Cello

3

9 *f* *p* *f*

17 *p*

25 *p* *f* *p* *f* *p* *f*

33 *p* *f* *p* *f* *p*

42 *f* *p* *f* *f* *p*

51 *f* *p* *f*

61 *p* 1. 2.

6. Pastorale

Largo

p *p* *f*

7 *f* *p* *mf*

14 *f* *p* *f*

20 *mf* *f* poco largamente

24 *p* *f* a tempo *mf* cresc. - - - - -

29

34

40

45

50

54