

# Serenade in D

## Haffner Serenade

### Corno I

W. A. Mozart  
KV250

**Allegro maestoso**

Corno I in D

9

20

31

42

50

59

69

88

99

107

119

**Allegro molto**

**A 2**

**B 11**

**C**

**3**

**3**

2 Corno I

127 *f*

140

153 D 3

167 3 *p* E *f*

180 *p*

188 *f*

197

207 F 11 *p*

226 *f*

234 G 3

245 3

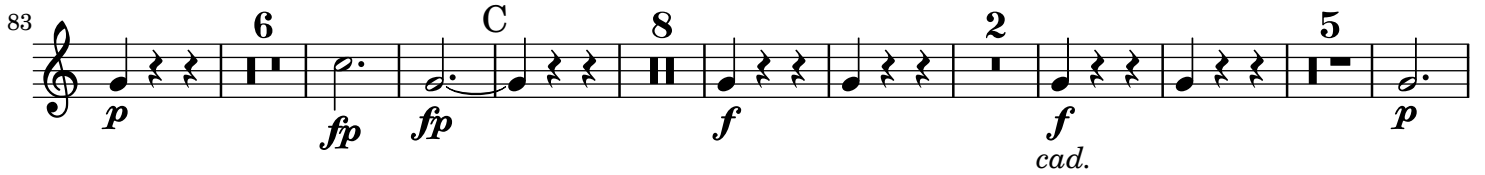
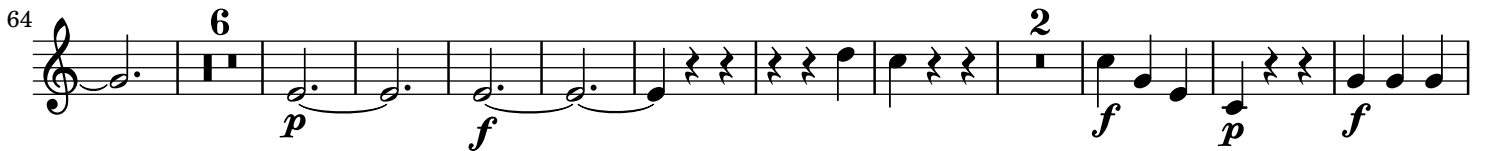
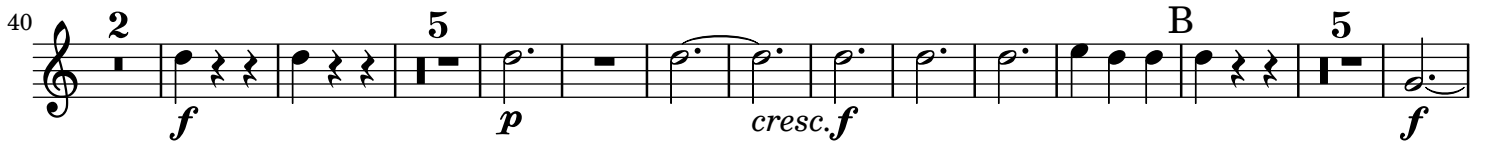
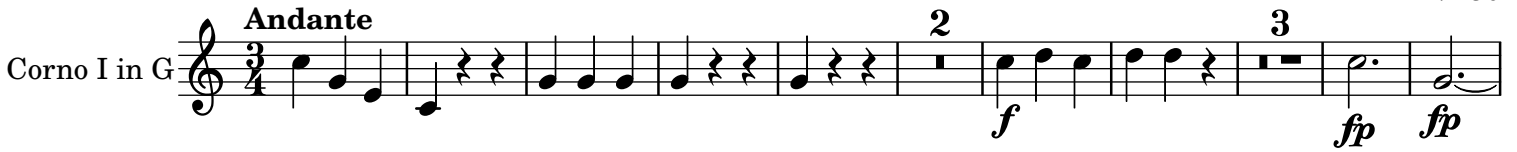
256 *p* *f*

264 H 2 *f*

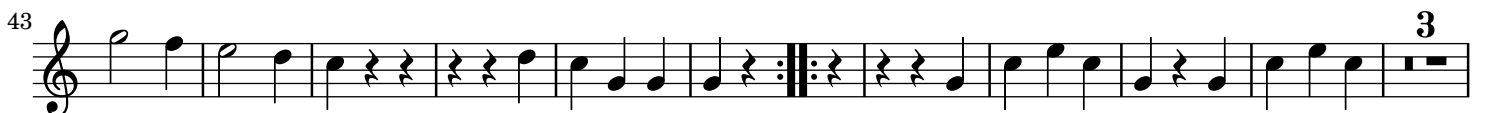
276



KV250



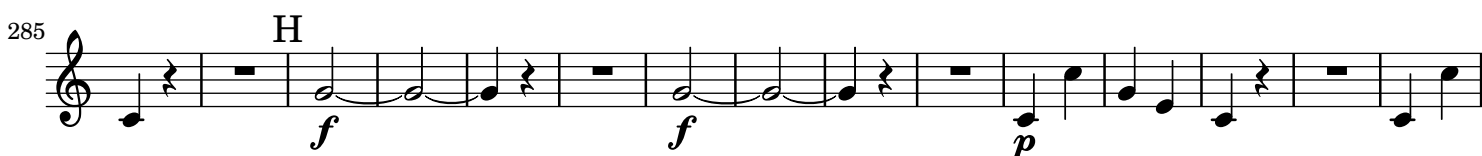
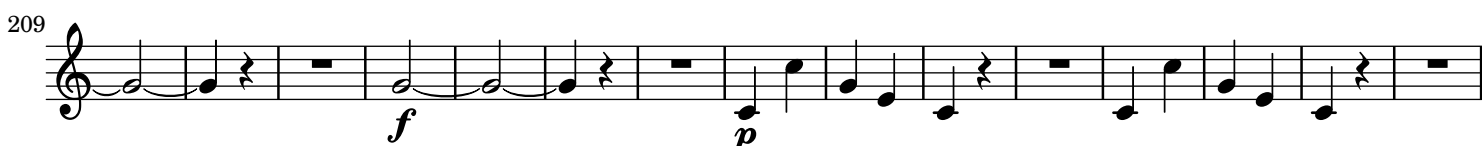
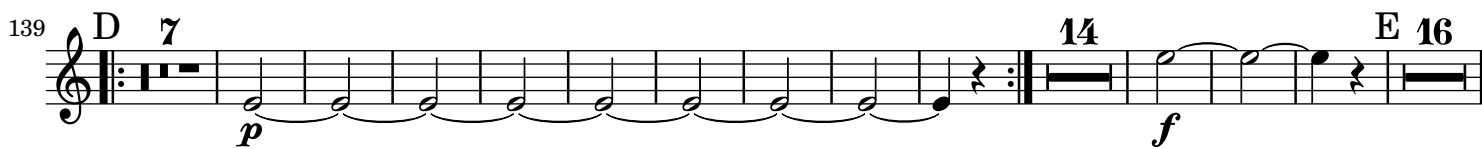
KV250



Menuetto da capo.

## Allegro

Corno I in G



300 **I 19**  
 332 **K 22** **L 19**  
 386 **M**  
 401 **4** **9**  
 425 **N 19**

*f* *f* *p* *cresc. - f* *p* *f* *f* *p* *cresc. - f*

KV250

**Menuetto galante**  
 Corno I in D **3/4**  
 15 **2** **3**  
 31 **5**  
 44 **Trio. 14** **19** **1** **2**

*f* *p* *f* *f* *p* *f* *p* *f*

Menuetto da capo.

KV250

**Andante**  
 Corno I in A **2/4**  
 17 **2** **3** **3**  
 34 **A 4** **3** **15 B** **4**

*f* *p* *f* *f* *p* *f* *f* *f*

## Corno I

6  
69 **6** *p* **3** *f* *p*

87 **3** **C 10** *f* *p* **D 7** *f*

117 **3** *p*

128 **10** **E** *f* **3** *f* **3** *p*

153 **3** **3 F** *f* **3** *f* *p*

171 **5** *f* *p* *p* **G** **3** *f*

189 *p*

198 **H** **9** *f* *p*

KV250

## Menuetto

Corno I in D **3** *f* *p* *f*

12 **3** *f* *p*

26 **7** *p* **15** *p* **Trio II.**

56 *fp* *fp* *p* *tr* *p*

67 *fp* *fp* *p* **Menuetto a DC**

## Adagio

4

3

3

Corno I in D

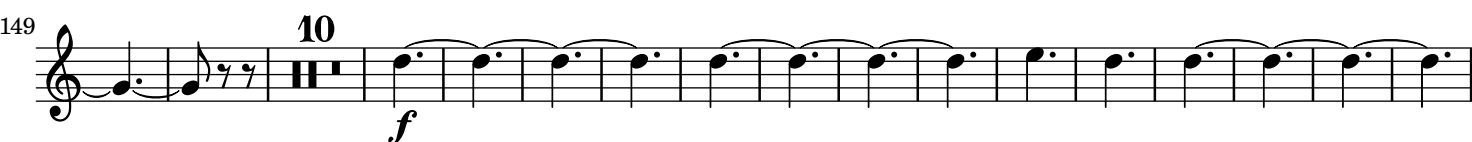
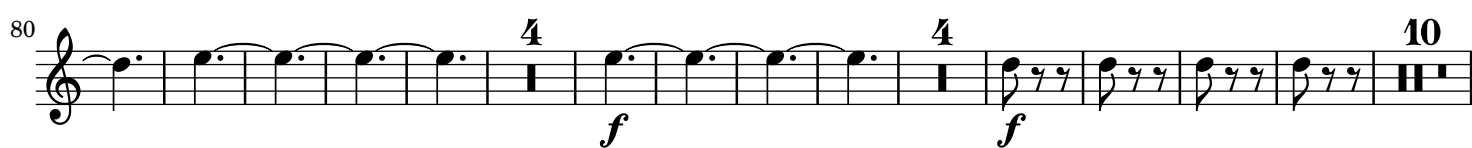
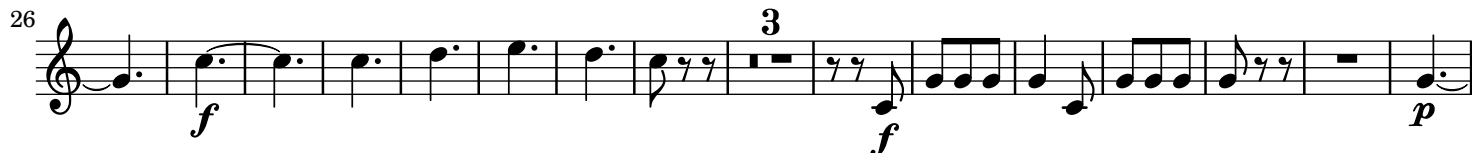


## Allegro assai

8

5

Corno I in D



325 *f* 4 4

348 *f* 10 G 7 *p*

379 17 10 *p* *f*

422 H 3 *f* *p*

440 *f* 5 *f*