

Serenade in D

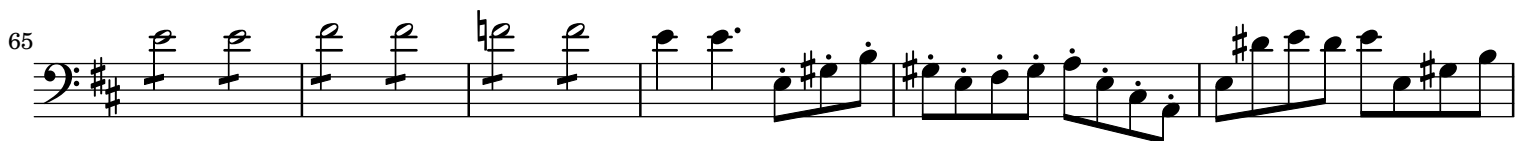
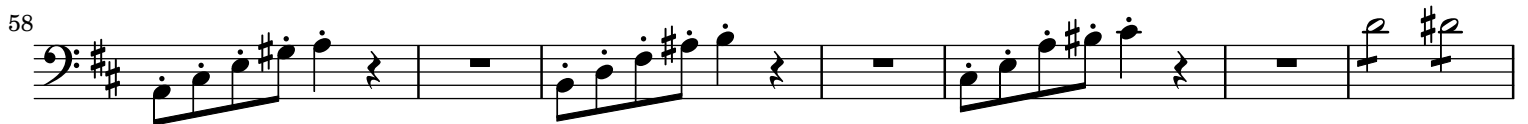
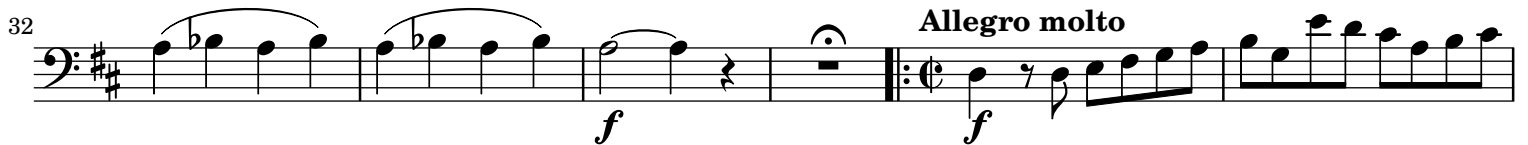
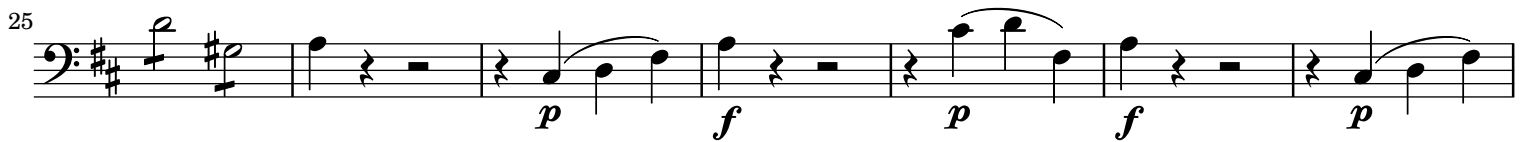
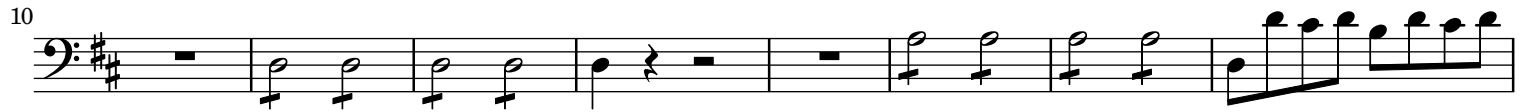
Haffner Serenade

Fagotto II

W. A. Mozart
KV250

Allegro maestoso

Fagotto II



171 *f* *f* E

177

184 *f*

190 *f*

197

205

211 F 4 *p*

221

227 *f*

232 G 3 *f*

241 3 *f*

250

120 *cad.*

p *cresc. - f* *fp* *fp*

Fagotto II **Menuetto** KV250

p

9

f *p* *f*

20

f *p*

29 **Trio.**

f *p* *f*

41

p

53 **Menuetto da capo.**

p

Fagotto II **Allegro** KV250

p *f* *f*

15 **A**

p *f*

29 **B** 19 22

f

78 **C** 19

p *cresc. - - - f*

cad.

111 **3** *p* *f* *f*

128 *p* *f* **D 16**

157 **10** *f* **E 4** *p* *f* *cad.*

200 *p* *f* *f* **F**

216 *p* *f* *p*

231 *G*

245 **19** *p* *f*

276 *cad.* *p* *f* **H**

291 *f* *p* *f*

306 *I 19* *K* *f*

334 **22** *p* *cresc. - - - f* *p* **L 19**

388 M
f *f* *p*

403 4 9 N 9

435 *p* *f*

445 *p cresc. - - f*

Menuetto galante KV250

Fagotto II

9 *f* *p* *f*

18 *tr.* *p* *fp* *fp* *p*

29 *f* *p* *f*

38 *p* *f*

46 Trio. *p*

54 *fp* *fp* *p* *cresc.*

65 2

Menuetto da capo.

76 *fp* *fp* *p* *cresc.* - - - - *f* *f*

KV250

Fagotto II *Andante* *p*

9 *f* *p*

19 *f* *f* *p*

29 *f* *p* A

38 *f* *p* *f* *p*

47 *f* B

62 *p* *f* *p*

72 *f* *p* *f*

82 *p* *f* *p* *p* C

92 *f* *p* *f* *p*

101 *f* *p* *f* *p* D

110 *f*

119 *p*³ *E*

126 *f* *p* *f* 6

142 *p* *f* *p*

152 *f* *p*

162 *f* *p* *f* *p* *F*

171 *f* *p*

181 *f* *G*

191 *p* *H*

199 *f* *p* *f* *p*

208 *f* *p*

Menuetto

KV250

Fagotto II *f* *p* *f*

9

17

27

56

67

Trio I.

Trio II.

Menuetto a DC

p *f* *p* *fp* *fp* *p* *fp* *fp* *p*

KV250

Adagio

Fagotto II

5

9

13

p *f* *f* *p* *f* *p* *pp* *p* *p* *f* *p*

KV250

Allegro assai

Fagotto II

8

28

40

f *f*

62 *p* *f* A

75 *p*

87 *f* *p* *f*

98 4

113 B 2 *p* 2

128

141 *f*

154

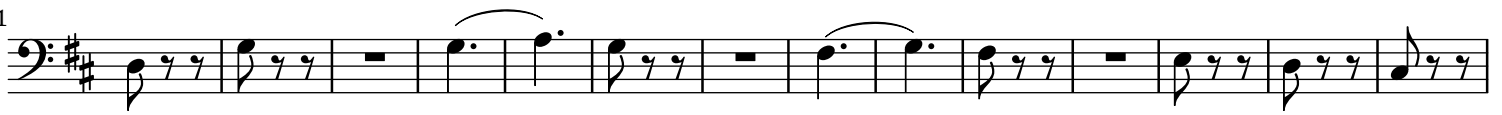
164

176 C 11 *f*

198 4 8 *f* 5

225 4 *f* D *p*

241



255



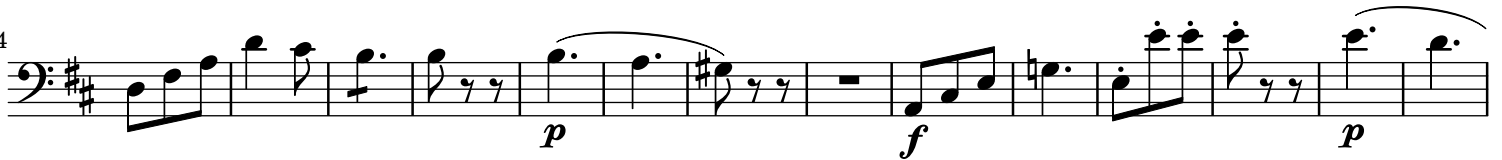
270



282



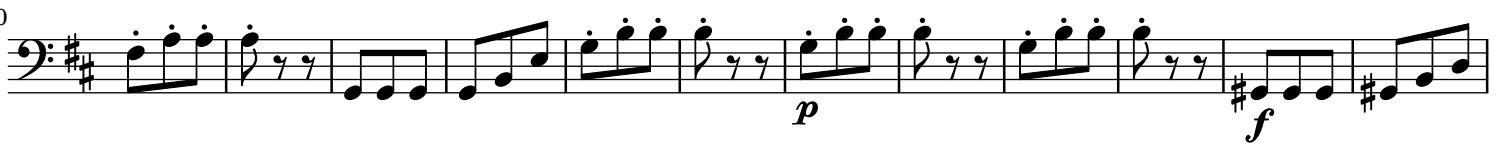
304



318



330



342



357



370



384



397



409

421

435

8

f

5

f

H

Detailed description: This image shows a page of a musical score for the second Bassoon (Fagotto II). The page is numbered 13 in the top right corner. The score is written in bass clef with a key signature of two sharps (F# and C#). It consists of three staves of music. The first staff starts at measure 409 and ends at measure 420. The second staff starts at measure 421 and ends at measure 434. The third staff starts at measure 435 and ends at measure 444. The music features various rhythmic patterns, including eighth and sixteenth notes, and rests. There are dynamic markings of *f* (forte) at measures 435 and 436. There are also articulation marks, including a breath mark (H) at measure 421 and a hairpin (8) at measure 435. The score concludes with a double bar line at measure 444.