

# Estate / Summer

## Il Cimento dell' Armonia e dell' Inventione -- Concerto II

Antonio Vivaldi (1678-1741)

Allegro non Molto

**A** Languidez per il caldo

Violino Secondo

Allegro non molto - Pianissimo

7

15

23

29 **B** 18 **Allegro Forte**

50

52 **Pianissimo**

58 **C** 12 **Piano** 5 **D** **Piano**

79

83 **Pianissimo Piano Pianissimo Piano**

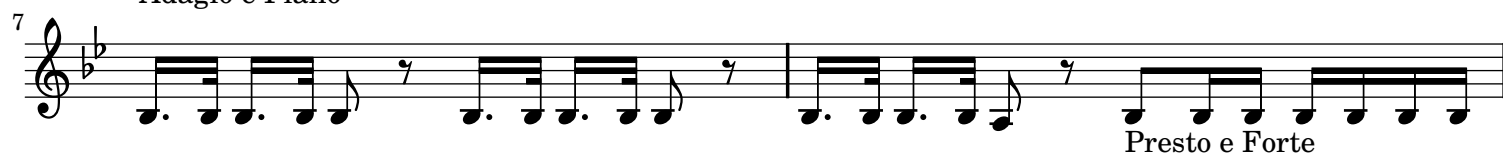
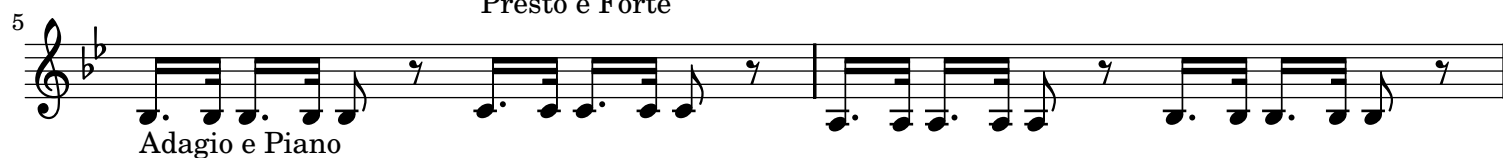
87 **Pianissimo Piano Pianissimo Forte**

Venti





Adagio



## Presto

Violino Secondo

G

Tempo impetuoso d' Estate

Presto

4

8

12

15

18

21

24

27

30

33

36



104

107

111

115

121

124

127

Piano

Forte

3

Sheet music for a piano piece, measures 104 to 127. The music is written in treble clef with a key signature of two flats (B-flat and E-flat). The tempo is marked 'Piano' and the dynamics are 'Forte' and 'Piano'. The score includes various musical notations such as eighth notes, sixteenth notes, and rests. A triplet of eighth notes is marked with a '3' above it in measure 115. The piece concludes with a double bar line in measure 127.